

SOLAR NET METERING AND BILLING FAQs



If you've recently had your solar meters installed or purchased a home with existing solar, you likely have questions. We want to help.

When you have a photovoltaic (PV) system installed, you're able to generate some or all of the energy you use on a monthly basis. In some cases, you generate more than you need, so there's some left over. That power generation is tracked and billed differently than your regular electricity use. The following information will help you make sense of how your solar energy is measured and what you'll see on your monthly energy bill.

How do you measure the solar energy I produce and use?

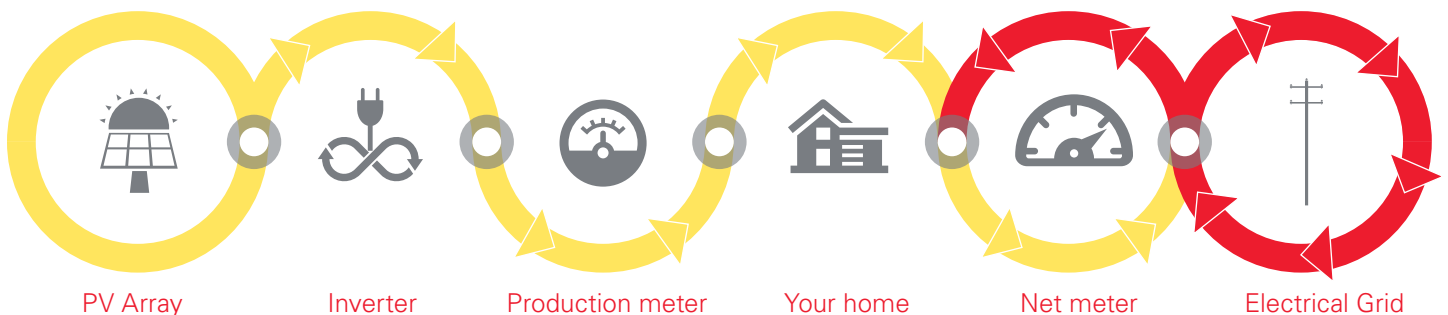
When a PV system is installed, the old meter is exchanged for a net meter. If the system is larger than 40 kilowatt (kW) AC, a PV production meter is also required.

- **Net Meter:** A meter records the flow of electricity in two directions—in-bound and out-bound energy. These two kilowatt hour (kWh) totals are read by the system and appear on your bill each month.
- **Production Meter:** A second standard meter may also be installed to record the PV system production and/or calculate the incentive payment.

Meters and Billing

How do you measure the energy I use?

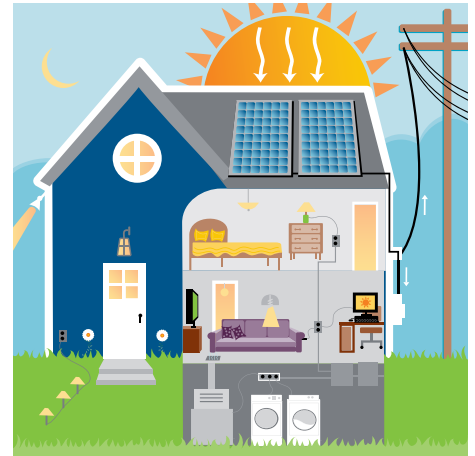
The energy from your panels travels to the inverter, then to the production meter.* This energy is then used in your home. The net meter measures electricity as it flows from our grid into your home or business, and as it flows from your PV system onto our grid.



We read your net meter on a monthly basis to determine whether you're a net user or a net producer based on the kWh totals recorded on your net meter.

- Net users use more energy in a month than they produce, and are billed for the net kWh.
- Net producers produce more energy than they use, and are billed for zero kWh. Any excess kWh are credited to your account at the applicable cogeneration rate.

*There are two meters for most PV systems depending on the time of installation. Older systems before early 2011 do not have production meters.



How do I get paid for the extra energy I produce and don't use?

If you're a net producer and your PV system produces more energy than you use, the excess kWh are credited to your account at the current cogeneration rate. Excess generation is netted on an annual basis (Jan 1-Dec 31) and paid out via check in the first quarter of the following calendar year. Solar customers are not exempt from fees charged to all electric customers, even when you produce more electricity than you use. These fees include, but are not limited to: basic service charges, resource adjustments, interim rate adjustments, city, county, and state taxes.

How is the solar energy I use and produce shown on my bill?

The Main Billing Meter measures electricity as it flows from our grid into your home or business, and when electricity flows from your PV system onto our grid. Xcel Energy currently installs bi-directional net meters. Ask your solar installer about real-time production tracking software for your PV system.

PV Production information is not always included on the net meter billing statement.



How much credit do I get paid for excess generation?

On the last monthly bill of the year, any excess generation will be netted against any usage not already offset during the previous twelve months. You will receive a credit for generation that is netted against any usage not already offset during the previous twelve months at the your retail rate. Excess generation is credited using a weighted average of summer, winter, and off-peak rates per the Net Energy Billing Service tariff.

2024 Blended LMP Rate per kWh: \$0.0299*

*Forecast LMPs (Locational Marginal Price) are subject to change annually

For more specific weighted average rate information, please reference these documents:

1. [NSPW Electric Rate Book - Sheet E55 \(Net Energy Billing Service\)](#)
2. [NSPW Parallel Generation Tariff Info Sheet](#)

BI-DIRECTIONAL NET METER



This meter separately measures the energy being pulled into your home from the grid and the energy your system is pushing out onto the grid.

Bi-Directional Net Meter Statement

METER READING INFORMATION			
METER NUMBER : 000000000		Read Dates: 12/20/12 – 01/22/13 (33 Days)	
DESCRIPTION	CURRENT READING	PREVIOUS READING	USAGE
Total Delivered by Xcel Energy	37376 Actual	36403 Actual	973 kWh
Total Delivered by Customer	3187 Actual	3148 Actual	39 kWh
Net Delivered by Xcel Energy	934 Actual	Actual	934 kWh
Net Generated by Customer	0 Actual	Actual	0 kWh

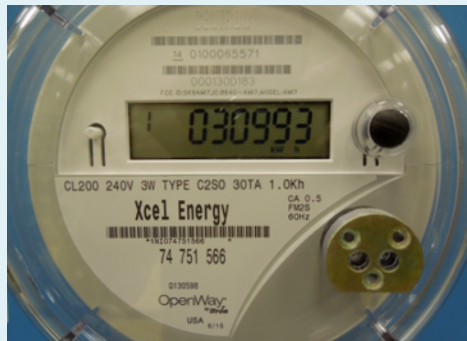
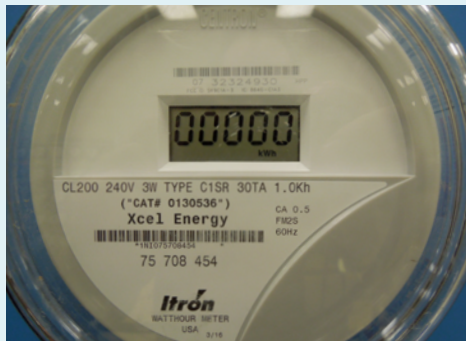
- This line shows the total energy you used from the grid.
- This line shows the amount of electricity your system delivered to the grid.
- This line represents the actual kWh you're being billed for.
- This line shows the net excess kWh generated by your PV system. This line does not represent total PV system production.

Please note:
One of these two readings will always be zero. If you're a net user, Net Generated by Customer will be zero, and if you're a net producer, Net Delivered by Xcel Energy will be zero.

What is the maximum solar system size in Wisconsin?

There is no maximum solar system size in Wisconsin.

PRODUCTION METER: You may see one of these three meters in use for your production meter



This is a standard meter that determines how many kWh your solar system is producing each month. Monthly statements are sent to the owner of the PV system. Production Meters are installed on systems greater than 40 kW AC.

Production Meter Statement

METER READING INFORMATION			
METER NUMBER : 000000000		Read Dates: 12/20/12 – 01/22/13 (33 Days)	
DESCRIPTION	CURRENT READING	PREVIOUS READING	USAGE
Total Energy	503 Actual	146 Actual	357 kWh

This line shows the total system production for the billing period.

Questions?

For more resources on solar and interconnection, please visit: xcelenergy.com/Renewables.

If you have any questions about your bill, please use the resources below:

For residential customers:

Residential Energy Experts: 800-824-1688
EE-Team@xcelenergy.com

For business customers:

Business Solutions Center: 800-481-4700
BSC@xcelenergy.com

If you have questions about your interconnection agreement or application, please send an email to SolarProgramWI@xcelenergy.com.

